

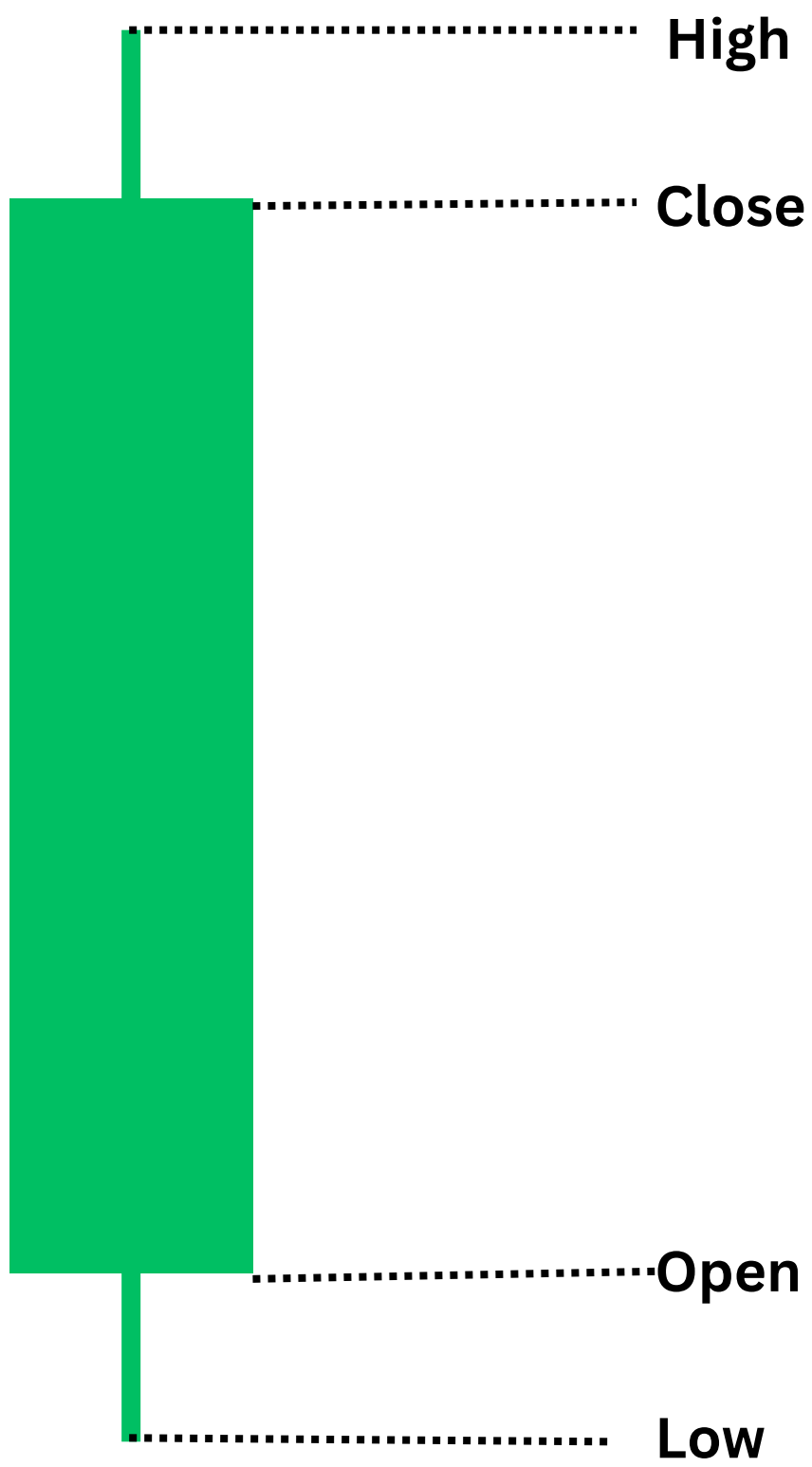
# CANDLE RANGE THEORY



# CRT UNLOCKED

KEVIN FERNANDO

# OHLC | OLHC Concept



## Note

.....

.....

.....

.....

.....

.....

.....

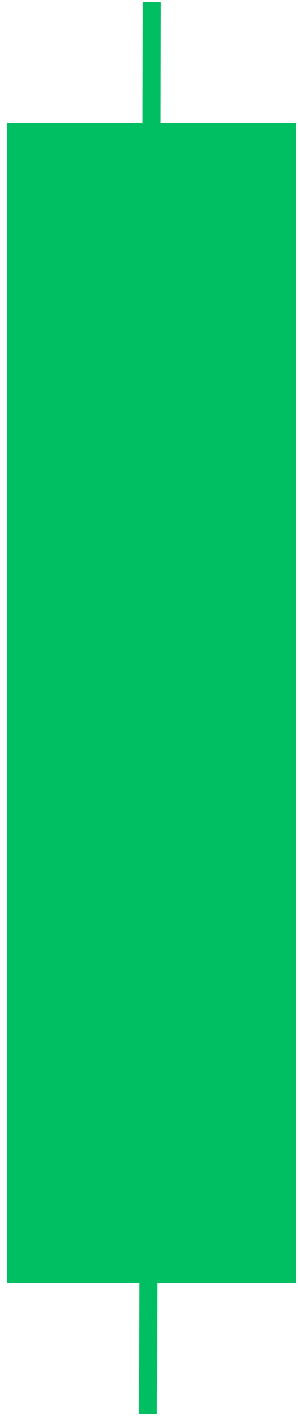
.....

.....

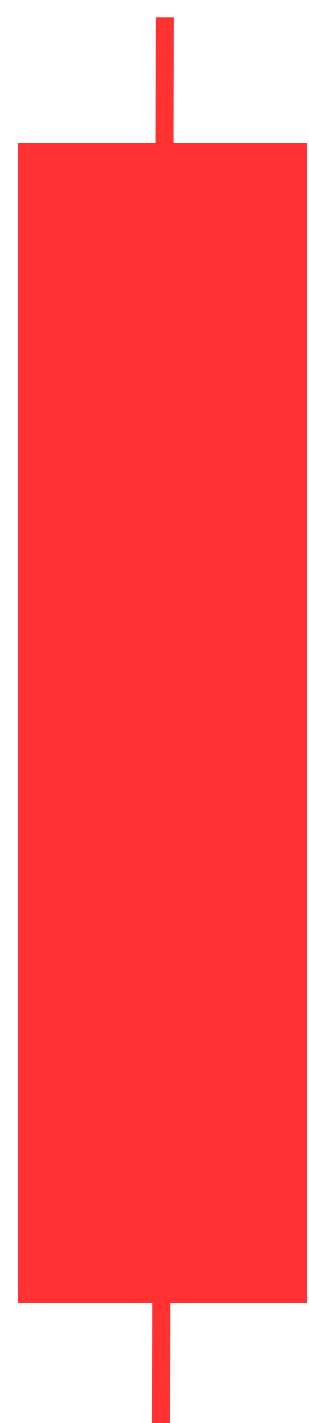
.....

# Candle Formation

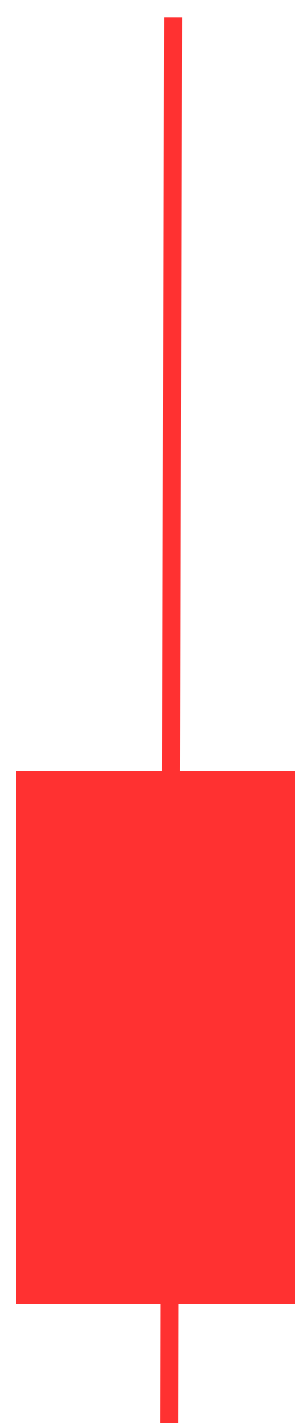
**Bullish**



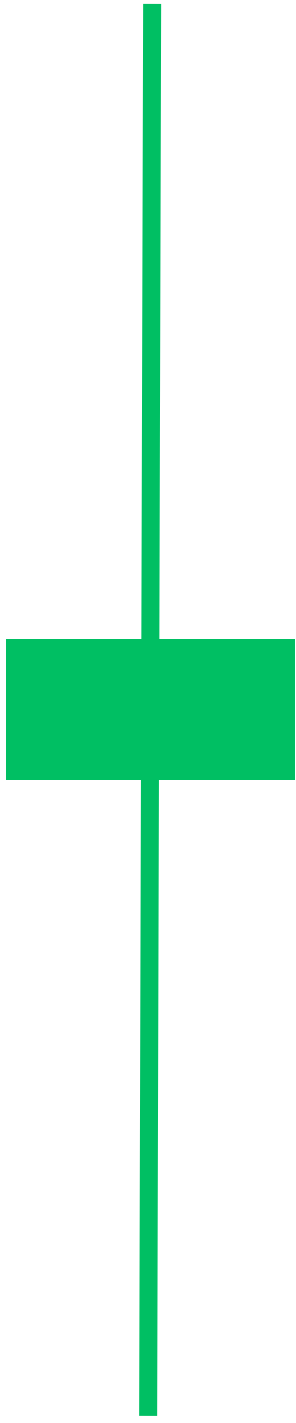
**Bullish Reversal**



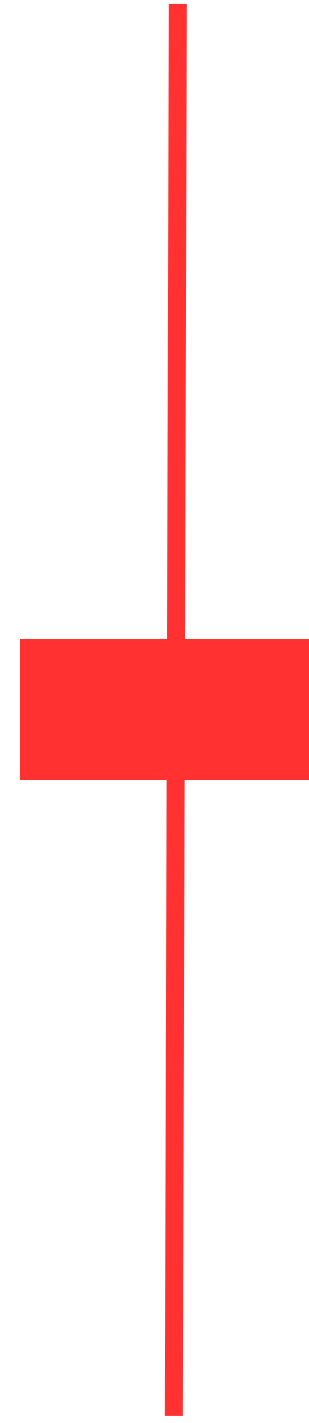
**Bearish**



**Bearish Reversal**



**Indirection**



.....

.....

.....

.....

.....

.....

.....

.....

.....

.....

.....

.....

.....

.....

.....

.....

# Power of 3 Concept

.....

.....

.....

.....

## Accumulation

.....

.....

.....

## Manupulation

.....

.....

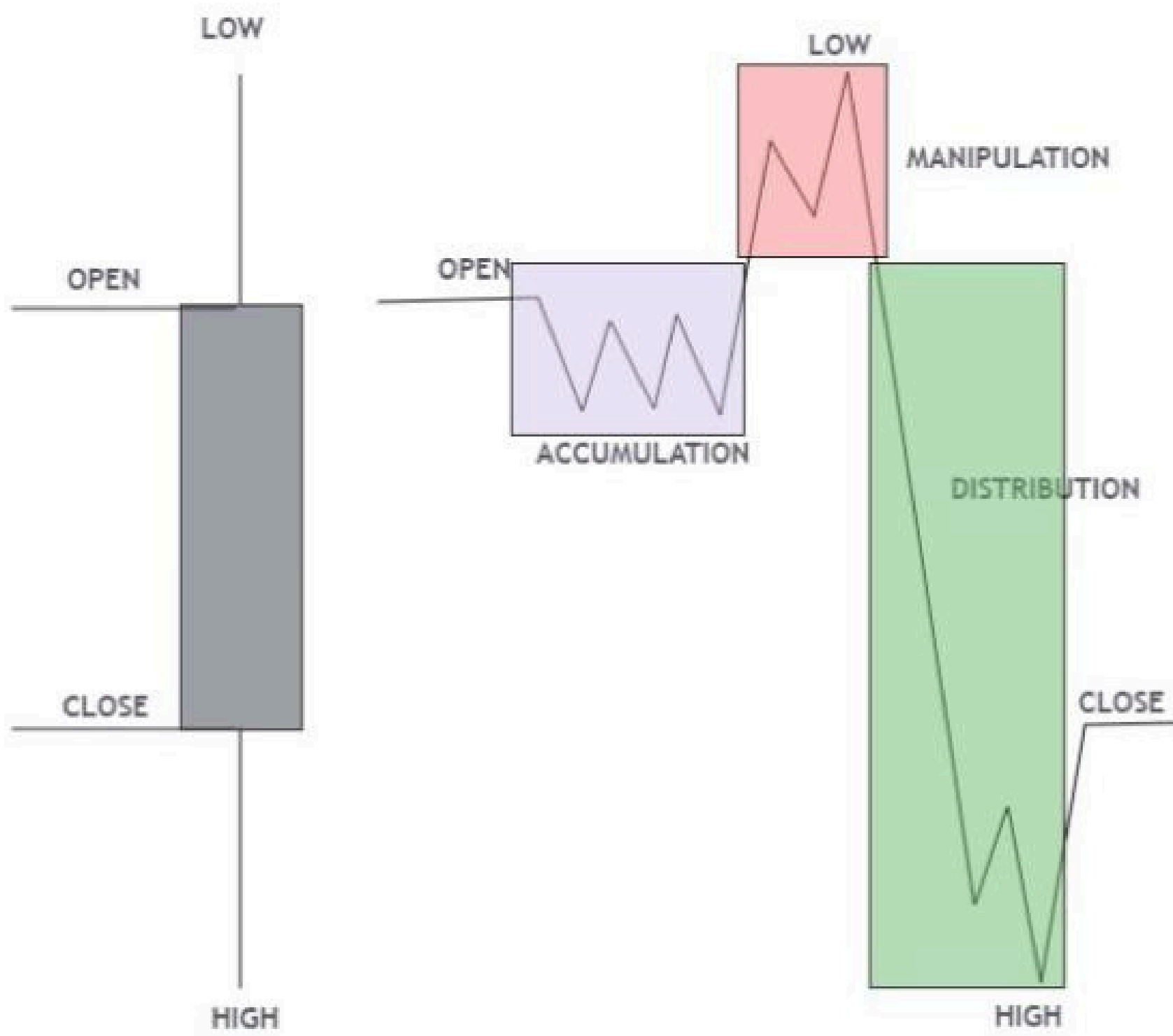
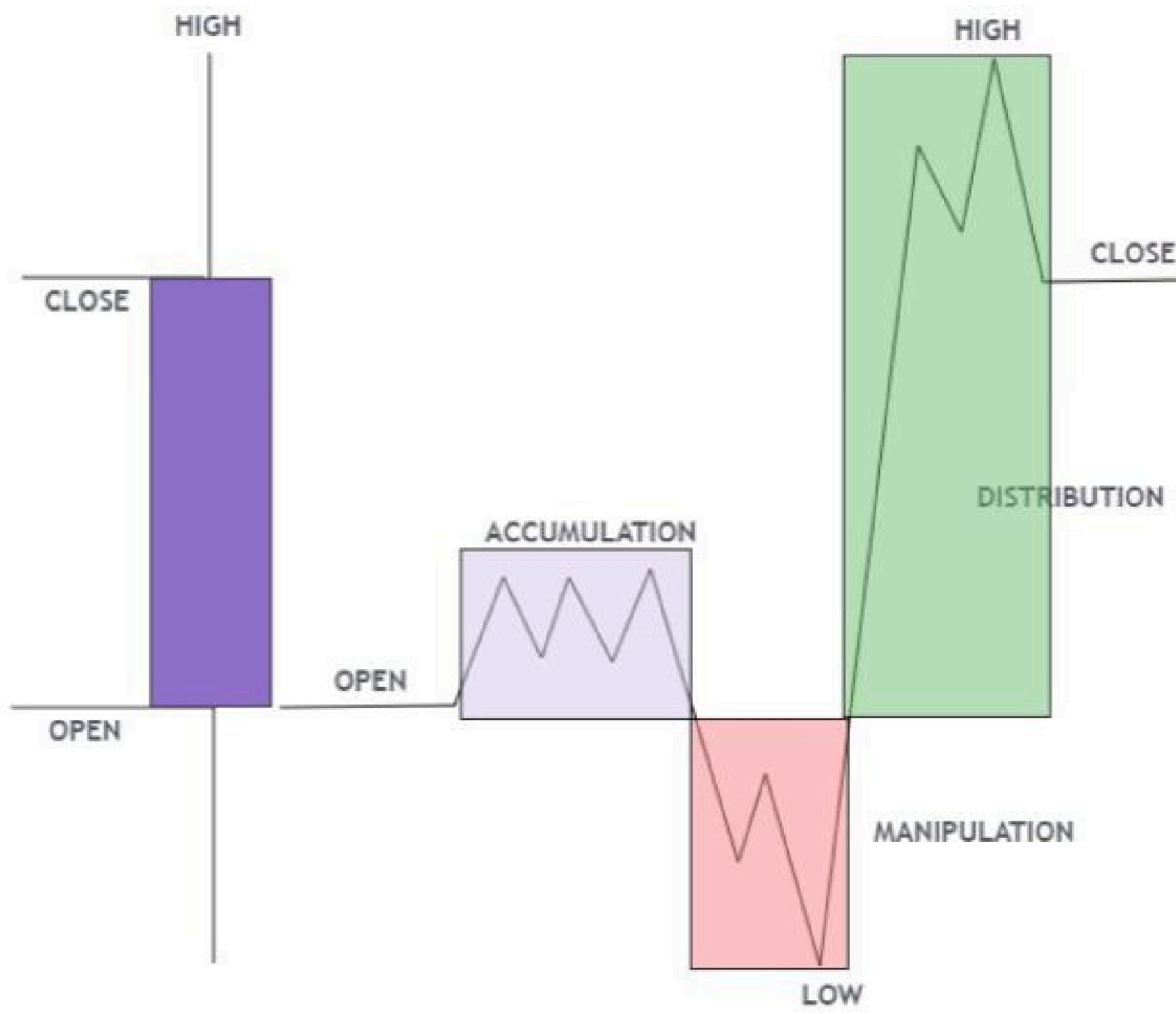
.....

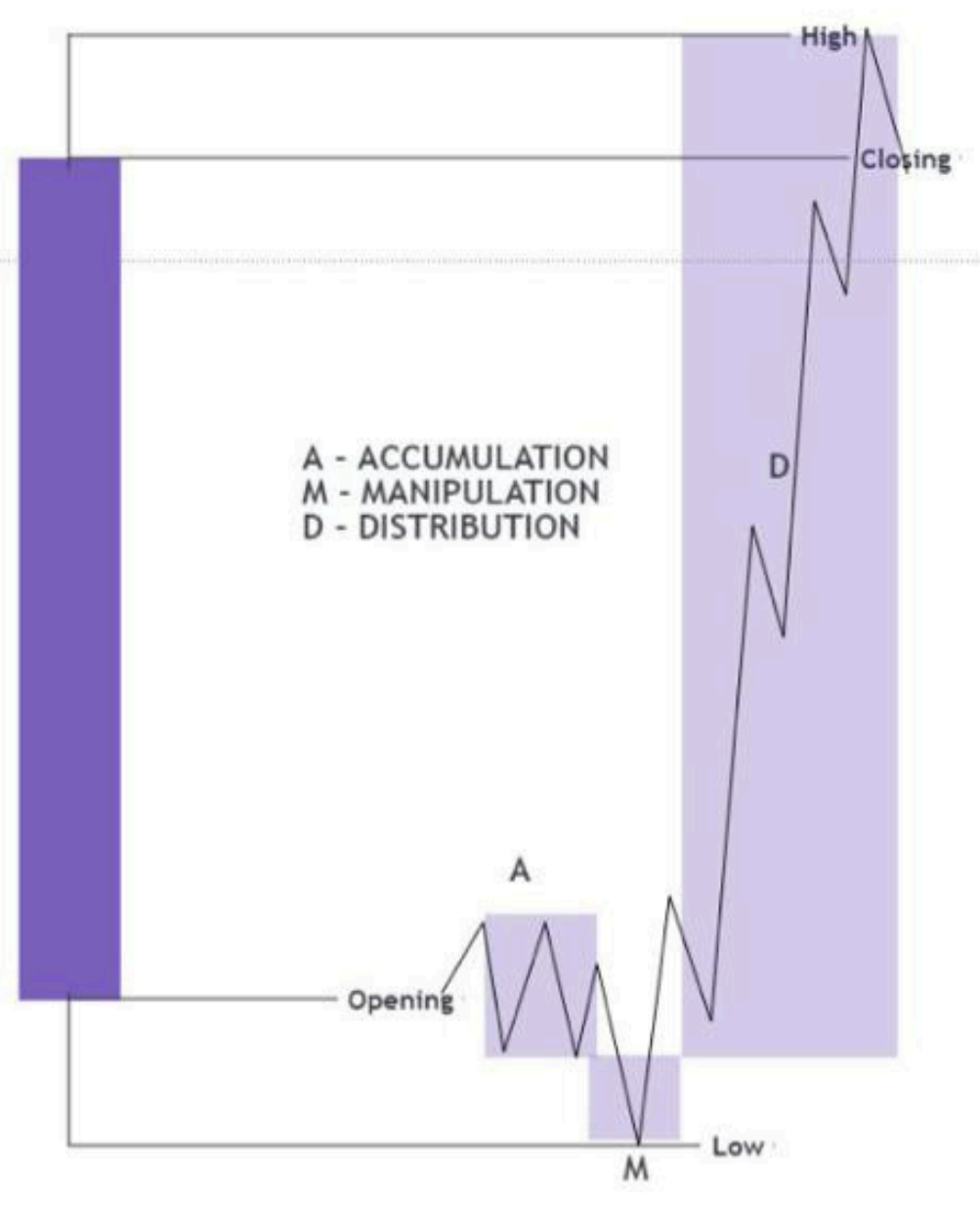
# Distribution

.....  
.....  
.....

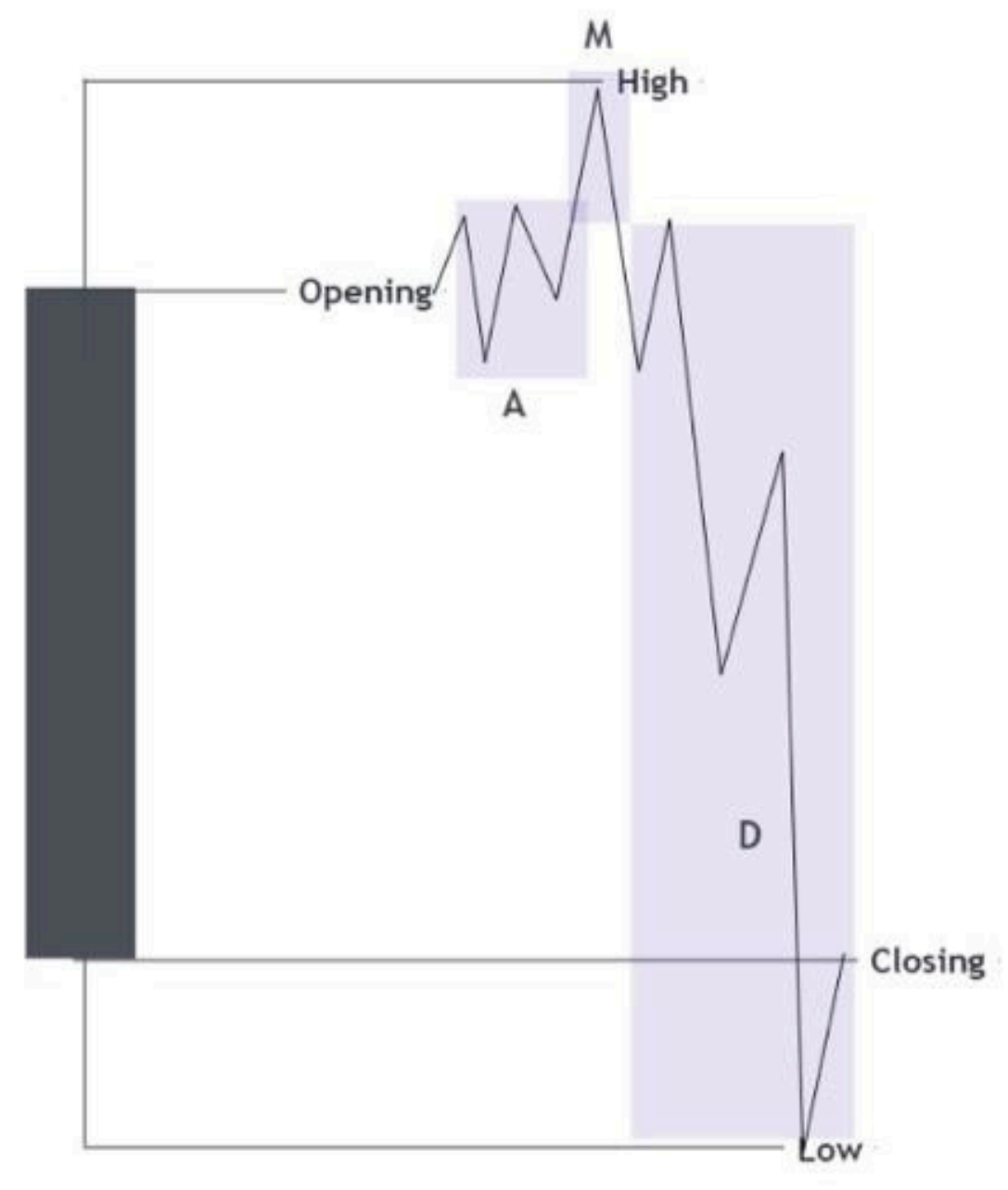
.....  
.....  
.....  
.....  
.....  
.....  
.....  
.....  
.....  
.....

# Imagine The Big Picture



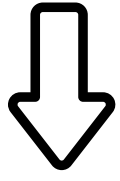


.....

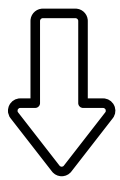


# Understanding Daily Bias

**BIAS**



**DOL**



**SETUP**

.....

.....

.....

.....

.....

.....

.....

.....

.....

.....

.....

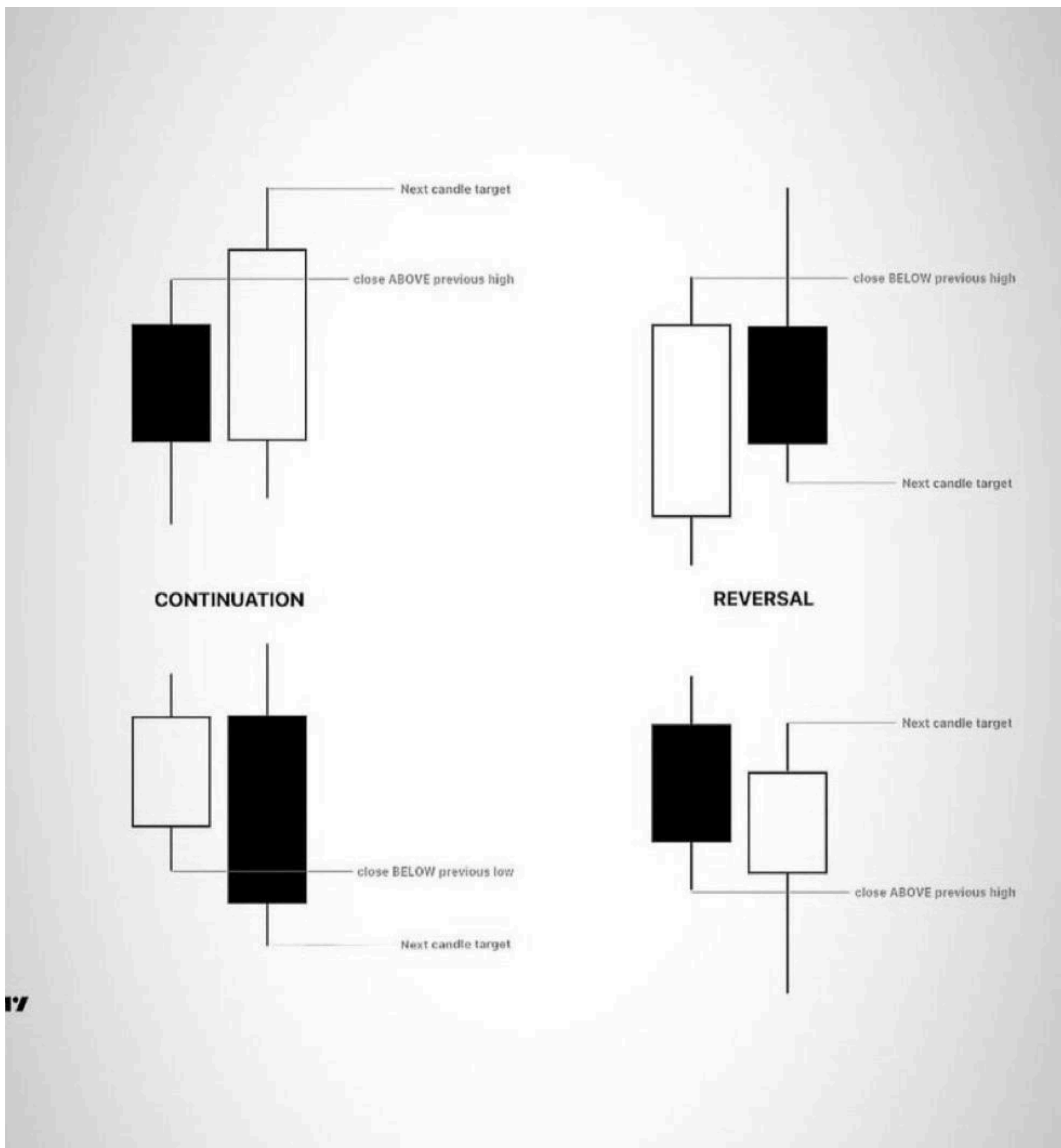
# What is Daily Bias?

Daily bias refers to understanding what the overall market is doing on higher timeframes especially the weekly and daily timeframe.

This determines:

- Are we trending or ranging?
- Are we bullish or bearish?
- Is the market seeking liquidity above or below?

Knowing this prevents counter-trend trades and keeps you aligned with HTF real moves.





# Understanding Liquidity

.....

.....

.....

.....

.....

.....

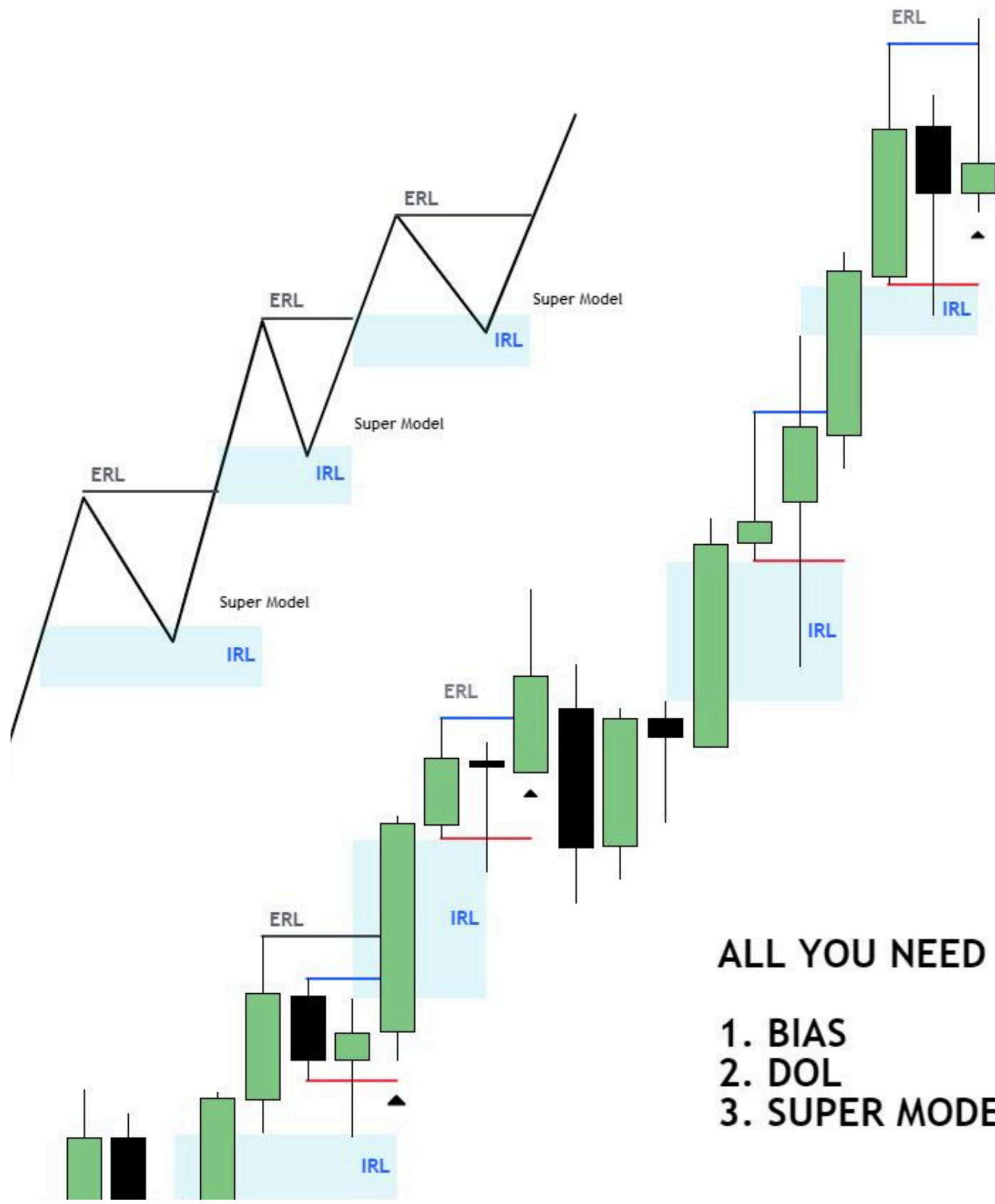
.....

.....

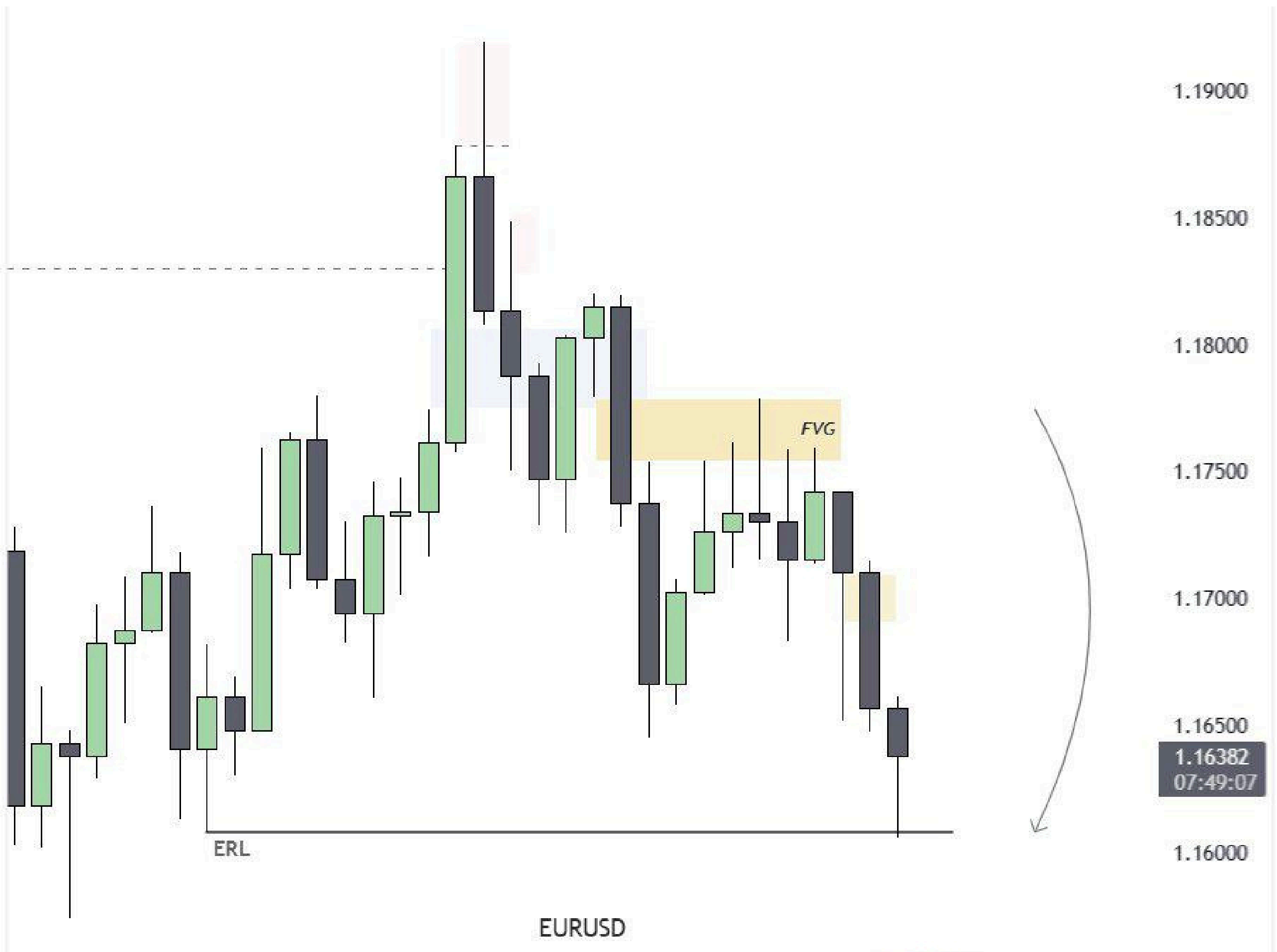
ERL ♻️ IRL

**THE GAME CHANGER TO ICT CONCEPTS**





- ALL YOU NEED :**
1. BIAS
  2. DOL
  3. SUPER MODEL





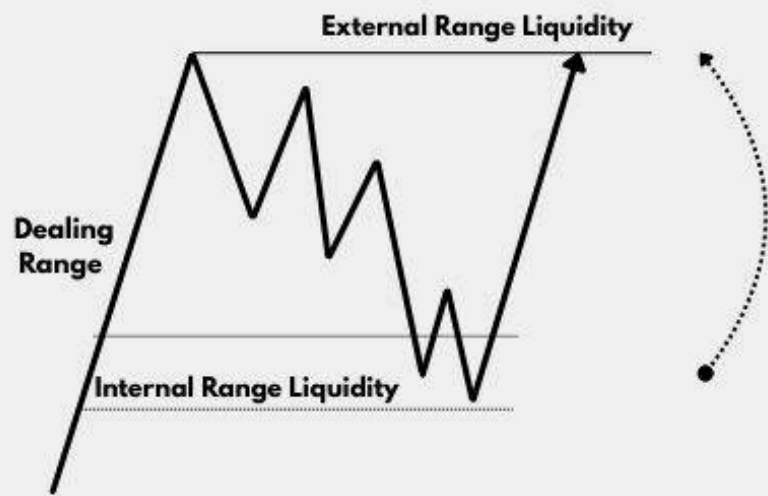
# Advanced Part

## INTRODUCTION

The market only does 2 things:

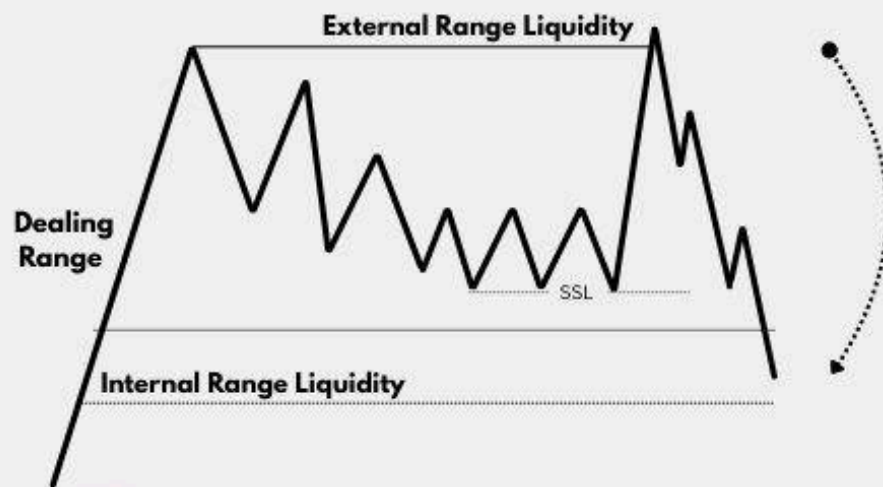
- ◆ Continuation (Internal → External)
- ◆ Reversal (External → Internal)

### Continuation Setup



✓ Continuation Setup → Price sweeps internal liquidity first, then runs for external liquidity.

### Reversal Setup



✓ Reversal Setup → Price sweeps external liquidity first, then targets internal liquidity.

✗ When no internal & external liquidity is being engineered = NO TRADE.

# PD Arrays

## Table of content:-

What is FVG ?

Types of FVG :-

- SIBI
- BISI
- BPR
- INVERTED FVG.

How to identify high Probability FVG!!

# What is FVG?

Fair Value gaps are imbalances caused in the market when one side is more dominant than the other.

How to mark it?

Gap between the first candle high and third candle low.

Gap between the first candle low and third candle high.



.....

.....

.....

.....

.....

.....

.....

.....

.....

.....

.....

.....

.....

# SIBI:-

## Key Points

- 3 candle pattern
- Sellside Imbalance Buyside Inefficiency
- Sellside was offered but buy side wasn't present causing inefficiency
- Good SIBI respect the Consequent Encroachment (CE)

## How to mark it?

Gap between the first candle low and third candle high.



.....

.....

.....

.....

.....

.....

.....

.....

.....

.....

.....

.....

.....

.....

.....

.....

.....

.....

.....

.....

.....

.....

.....

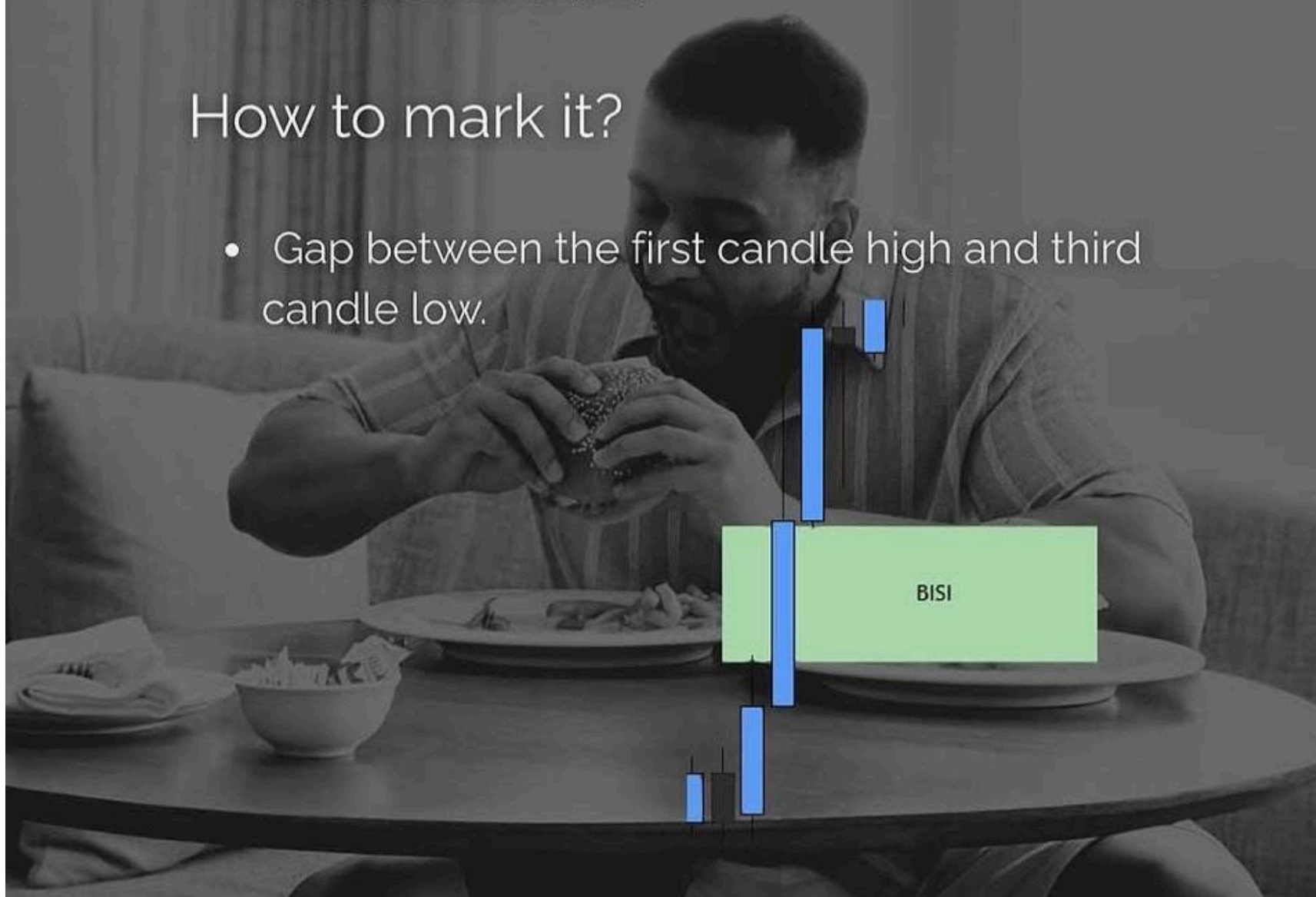
# BISI:-

## Key Points :-

- 3 candle pattern.
- Buyside Imbalance Sellside Inefficiency.
- Buyside was offered but sellside wasn't present causing inefficiency.
- Good BISI respect the Consequent Encroachment (CE).

## How to mark it?

- Gap between the first candle high and third candle low.



.....

.....

.....

.....

.....

.....

.....

.....

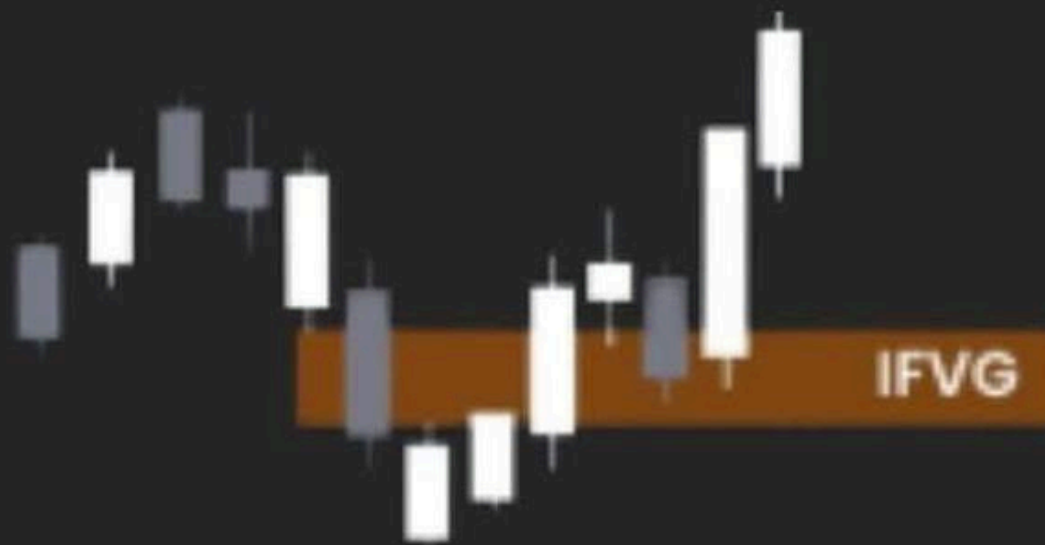
.....

.....

.....

# INVERTED FVG:-

- Failed FVGs which act as reaction zones for price later.
- When SIBI acts as support and BISI acts as resistance.
- When you use BISI as IFVG use it in the premium pricing zone.
- When you use SIBI as IFVG use it in the discounted pricing zone.



.....

.....

.....

.....

.....

.....

.....

.....

.....

.....

.....

.....

.....

.....

.....

.....

.....

.....

.....

.....

.....

.....

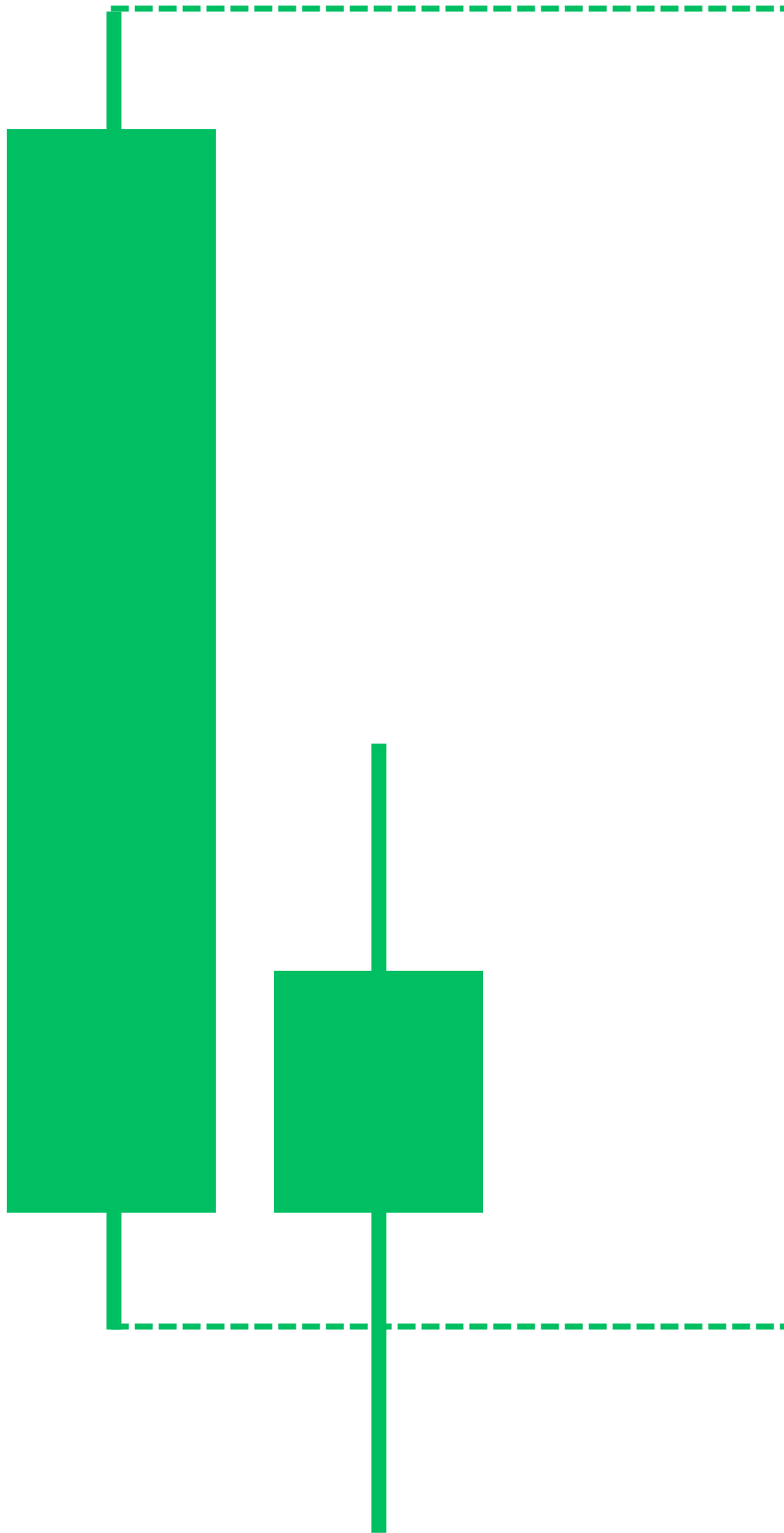
.....

## BPR (Balance Price Range):-

- More commonly known as Double FVG. Overlapping area between two FVGs.
- By product of an aggressive move down and then an aggressive move up or vice versa.
- The overlapping area of the two fvg's acts as a magnet for price.
- Can't work good in isolation. You must have a higher timeframe bias.



# How to Find CRT



.....

.....

.....

.....

.....

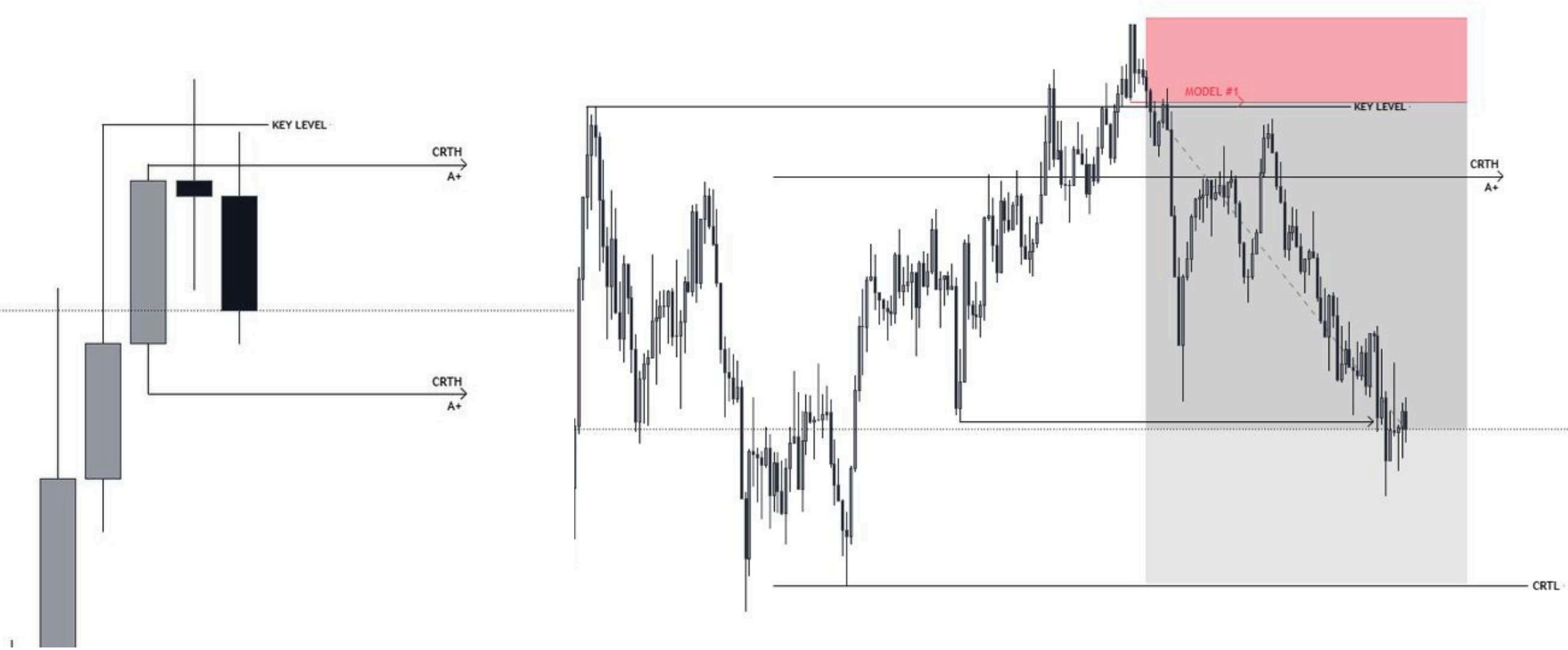
.....

.....

.....

.....

.....



## Note

.....



.....

.....

.....

.....

.....



.....

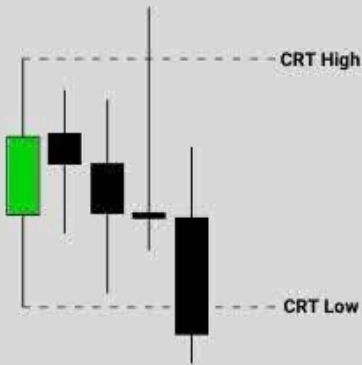
.....

.....

.....

.....

### Inside Bars within CRT:



Combining CRT with TSQ: Incorporating CRT with TSQ not only simplifies and objectifies your entries on lower timeframes but also eradicates the complexities commonly encountered. Numerous traders encounter difficulty in pinpointing the optimal framework for their entries on shorter timeframes, presenting a notable hurdle. TSQ addresses this obstacle by presenting a series of clear-cut and effective entry stages, accompanied by precise protocols.

Furthermore, the presence of inside bar candles increases the probability of CRT unfolding with precision. These candles signal a phase of accumulation, followed by manipulation, assisting in pinpointing which side could potentially experience purging.

.....

.....

.....

.....

.....

.....



In this instance, multiple inside bar candles are visible within the CRT, which enhances the potential for a more explosive expansion towards the opposing end of the range once one side was purged.

Furthermore, following the purge of the CRT High, it commenced its movement towards the remaining 50% of the range and ultimately reached the opposite end.

This could have greatly assisted you in addressing your bias and DOL.

This is how you assess bias and DOL.

You then integrate it with the other protocols.

.....

.....

.....

.....

.....

.....

.....

.....

.....

.....

.....

(HTF)



Another improvement to the inside bars protocol entails waiting for a CSD to happen on the timeframe below it. This extra step enhances accuracy and increases the probability of bias while also attracting liquidity.

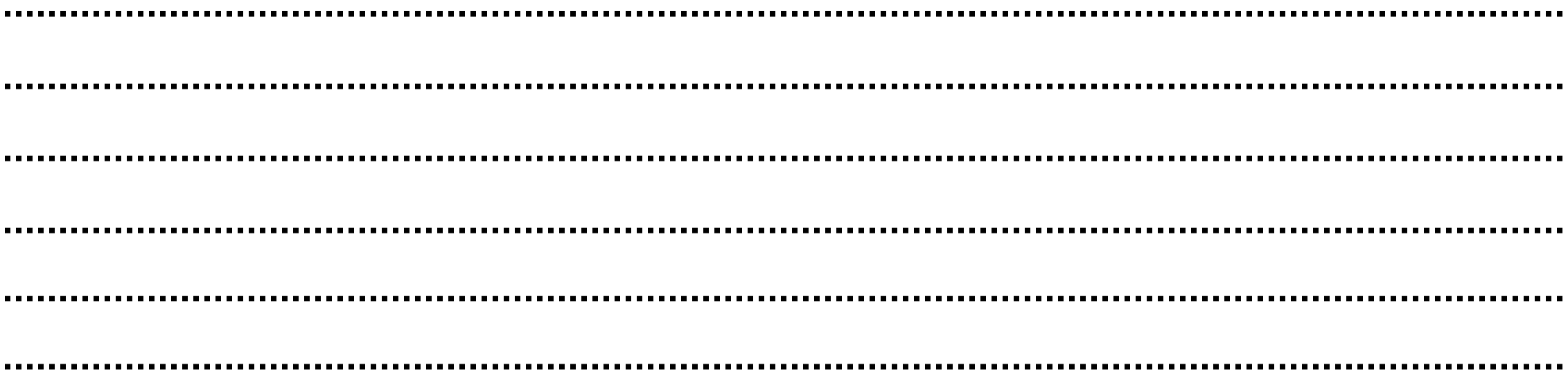
This additional step alone increases the probability by a 50% margin.

(LTF)



Awaiting a CSD's occurrence means you're confirming the purge, significantly elevating the likelihood of CRT occurrence by a substantial margin.

(It's advisable to consistently employ this alongside other protocols.)

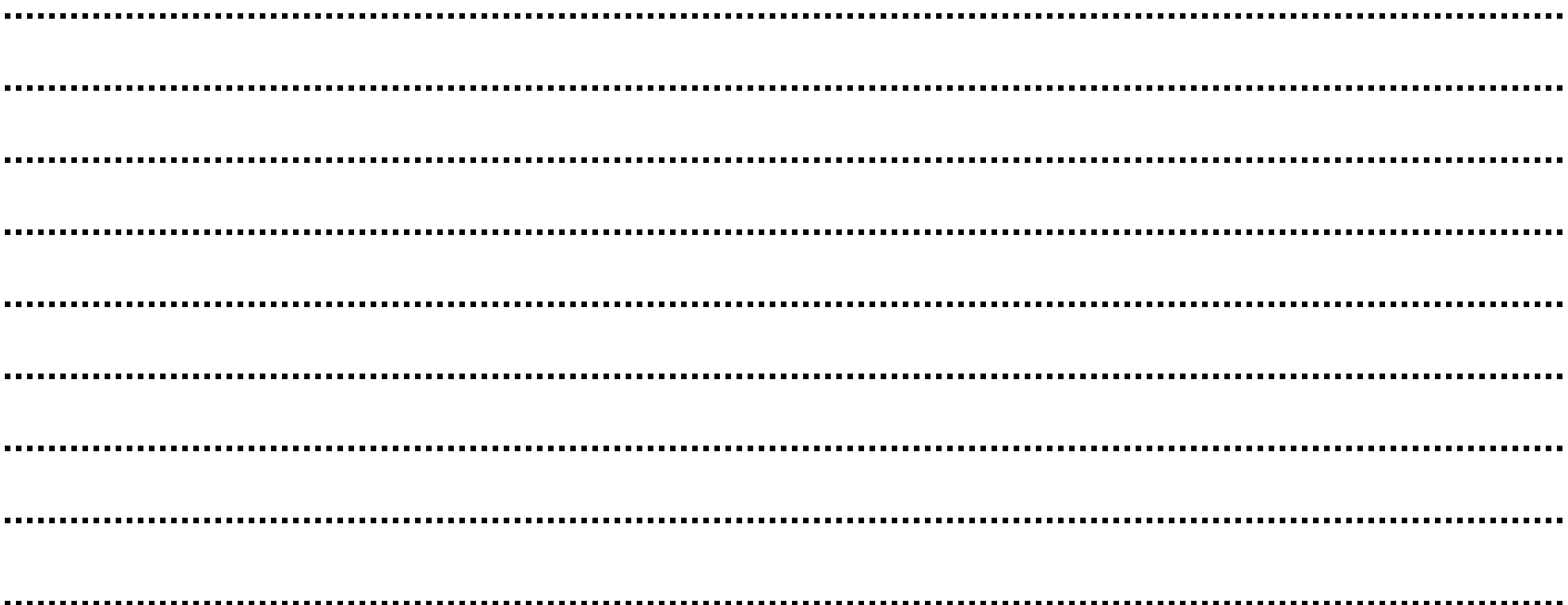


(HTF)



- Wait for one side to be purged.
- Drop down to a LTF.
- Wait for CSD/OB to occur.
- This confirms the purge.
- Target the opposite side of the range.

(LTF)



Key levels surrounding CRT act as triggers for reactions and expansions toward the opposite end of the range. Distinguishing these levels entails a distinct hierarchy, typically located on a timeframe higher than that utilized for identifying CRT. For instance, if H4 is utilized for CRT analysis, the Daily timeframe is employed for pinpointing Key Levels, ensuring alignment of timeframes. The hierarchy of key levels, ranging from highest to lowest quality, includes:

- Rejection Blocks: These form after a protected low, making them notably strong when coupled with CRT.
- OrderBlocks
- Fair Value Gaps
- Breakers

Rejection Blocks, which emerge following a protected low, exhibit significant potency when combined with CRT because of their heightened success rate. Additionally, Other Key Levels like OrderBlocks, Fair Value Gaps, and Breakers prove to be equally advantageous selections for CRT.

- Rejection Blocks (RJB)
- OrderBlocks (OB)
- Fair Value Gaps (FVG)
- Breakers (BRK)



.....

.....

.....

.....

.....

.....

.....

.....

.....

*(LTF) for finding CRT  
(4H)*



*(HTF) for pairing key level with  
(Daily)*



.....

.....

.....

.....

.....

.....

.....

.....

.....

Examples:

- ~ If you're using H4 for CRT, then use the Daily for Key Levels.
- ~ Daily for CRT, then use the Weekly for Key Levels.
- ~ Weekly for CRT, then use the Monthly for Key Levels.

This is timeframe alignment. You can use it on lower timeframes than these as well, like the H1 and 15m.

Daily for CRT



Weekly for Key Level



.....

.....

.....

.....

.....

.....

.....

.....

.....

.....

The figure shows two candlestick charts. The top chart is labeled '(LTF)' and shows a CRT with 'CRT High' and 'CRT Low' labels. A horizontal line labeled 'Key Level' is drawn above the CRT. A red arrow points to the start of the CRT. The bottom chart is labeled '(HTF)' and shows a CRT with an 'OB' label. A red arrow points to the start of the CRT.

### Combining [Inside Bars] and [Key Levels]

By integrating the initial two protocols, we can enhance the caliber of our CRTs quality to an advanced level, leading to improved accuracy and precision.

Integrating the Inside Bar Protocol with the Key Levels Protocol allows us to enhance the quality of our CRT even further.

As we incorporate additional protocols, the quality of our CRT will continue to improve.

.....

.....

.....

.....

.....

.....

.....

.....

.....

.....

Protocol #1 & Protocol #2 Combined



.....

.....

.....

.....

.....

.....

Timing of CRT Purge:



Just as high-quality CRTs materialize at specific times, high-quality purges of CRT ranges also unfold at specific times.

In this example, the CRT formed at 5am EST, featuring inside bars that improved its quality. However it doesn't stop there. The CRT then purged the CRT Low at a specific time, 9am EST, further increasing the probability of the CRT due to the timing of the purge.

This exemplifies the harmonious synergy between time and CRT analysis. We can apply the 159 and 369 analogy to enhance your comprehension further.

.....

.....

.....

.....

.....

.....

.....

.....

.....

.....

.....

.....

### Pairing different CRTs :



I've already provided many protocols, and here's another fantastic one to add to the mix: pairing different CRTs within the same timeframe.

We can identify both Micro & Macro CRTs within the same timeframe, and the key is to analyze the Macro CRT to determine which side has been purged. Utilizing this insight as a bias and draw of liquidity (DOL) towards the opposing end of the Macro CRT.

After establishing this bias, we can proceed to identify Micro CRTs within the Macro CRT. By integrating this method with all other protocols, we can significantly improve our comprehension of bias and DOL more efficiently than ever.

.....

.....

.....

.....

.....

.....

.....

.....

.....

.....

Follow Us

